

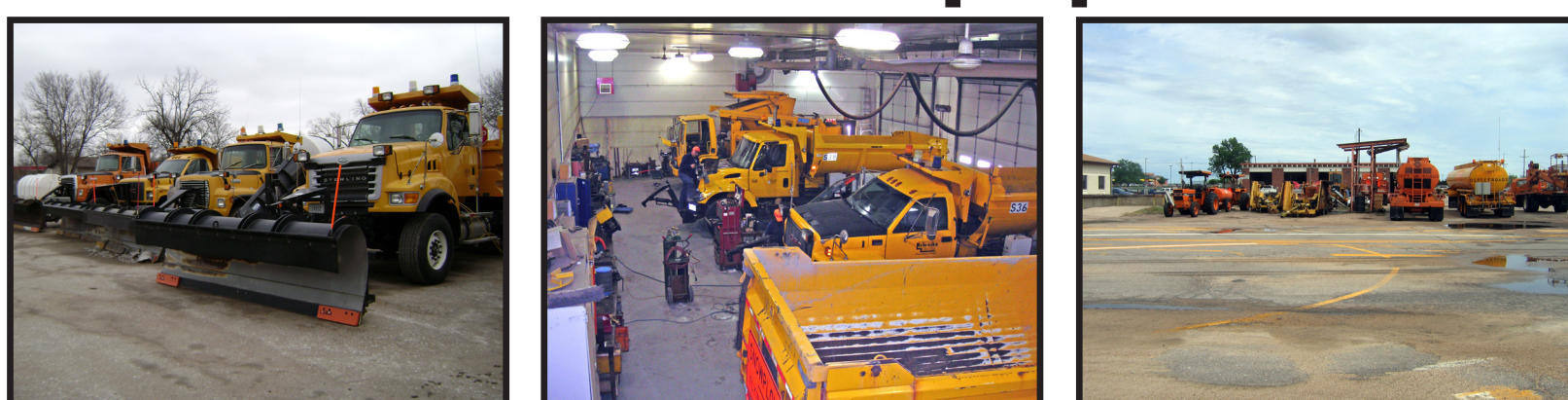
# Nebraska Department of Transportation Municipal Pollution Prevention

## Building & Grounds



- Keep culverts, gutters, and catch basins free of pollutants.
- Sweep paved areas to remove dirt, grit, grass clippings and other pollutants.
- Identify and repair off site erosion quickly to prevent impact to vegetation and drainage channels.

## Vehicles & Equipment



- Conduct maintenance or repairs away from drain inlets or catch basins.
- Clean up fuel & oil residues with absorbents, then sweep up material.
- Park vehicles & equipment close to pumps and don't top off tank when fueling.

## Product Materials



- Locate raw material stockpiles away from drain inlets and catch basins.
- Store materials in a dedicated area away from direct traffic routes to prevent damage or spills.
- Ensure all containers are properly labeled.

## Bulk Storage Containers



- Inspect tanks, pumps, pipes and valves for leaks and signs of corrosion.
- Keep valves or plugs on secondary containment closed at all times except when draining uncontaminated water.
- Make sure automatic shutoff valves are functioning properly.

## Waste Materials



- Cover and clearly label all waste receptacles according to waste type.
- Develop a plan to reuse or dispose of construction salvage as soon as material is brought on-site.
- Store batteries in upright position in leak-proof and covered containers.

For more information contact the NDOT at:

**NEBRASKA**

Good Life. Great Journey.

DEPARTMENT OF TRANSPORTATION

Phone: 402-479-4656  
Email: [dor.operationsenvironmental@nebraska.gov](mailto:dor.operationsenvironmental@nebraska.gov)  
Address: 1500 Highway 2  
PO Box 94759  
Lincoln, NE 68509-4759  
Website: [dot.nebraska.gov/projects/environment](http://dot.nebraska.gov/projects/environment)