

AUTHORITY REMOVAL

NEBRASKA

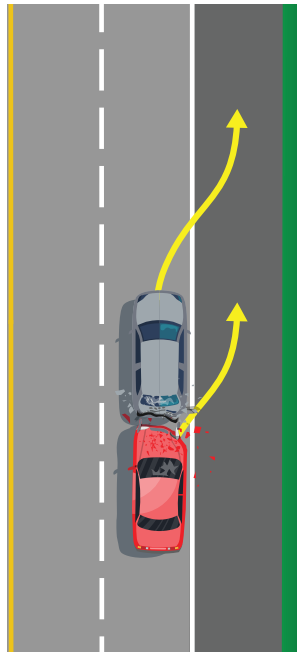


TRAFFIC INCIDENT MANAGEMENT

Authority Removal

Law enforcement can move vehicles themselves or order (driver, tow, DOT, fire) them to be removed from the roadway to keep traffic flowing. Crashed vehicles can often move off the roadway under their own power, even if they make noise, drag parts, or leak fluids.

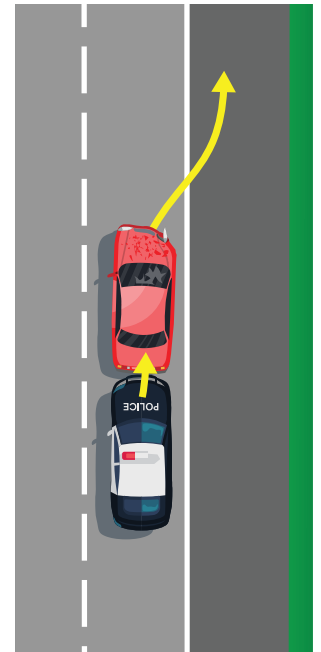
**Always follow your agency's policies and guidelines*






Pushing Vehicles

The risk of pushing a vehicle is lower than the risk of a secondary crash. Secondary crashes are often more severe than the primary incident.

**Always follow your agency's policies and guidelines*






Lane Blocking Crashes

-  Roughly a quarter of all congestion is crash related
-  Nearly 10% of all freeway crashes are secondary crashes
-  The probability of another freeway crash goes up by 1% every 2-3 minutes on scene

Safe, Quick Clearance

Authority removal supports quick clearance by opening lanes as soon as possible

This benefits:

-  Responder safety
-  Motorist safety
-  Traffic, the economy, and environment

Statutes

Nebraska 60-696

(5) (3)(a) A peace officer may remove or cause to be removed from a roadway, without the consent of the driver or owner, any vehicle, cargo, or other property which is obstructing the roadway **creating or aggravating an emergency situation** or otherwise endangering the public safety. **Any vehicle, cargo, or other property** obstructing a roadway **shall be removed** by the most expeditious means available to clear the obstruction, giving due regard to the protection of the property removed

