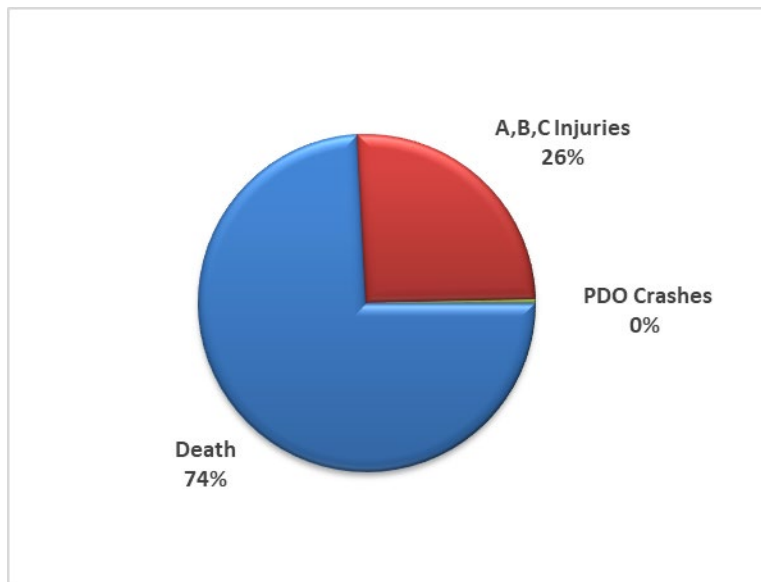


# NEBRASKA COST ESTIMATE FOR MOTORCYCLE CRASHES IN 2020

The cost of each type of motor-vehicle crash includes wage and productivity losses, medical expenses, administrative expenses, motor vehicle damage, and uninsured employer costs for crashes involving workers. The information below indicates the average economic costs in 2015 per death (not each fatal crash), per nonfatal disabling injury (A) (not each injury crash), visible, but not disabling injury (B), visible, but not disabling injury (C), and per property damage crash.

Type of Injury/Crash	Number of each type of Injury/Crash	Cost Per each type of Injury/Crash	Total Cost of all types of Injuries/Crashes
Death	34	\$1,550,000	\$52,700,000
Disabling Injury	130	\$90,000	\$11,700,000
Visible, but not Disabling Injury	188	\$26,000	\$4,888,000
Possible Injury	74	\$21,000	\$1,554,000
Property-damage crashes	52	\$4,200	\$218,400

<b>Total Projected Costs in 2020</b>	<b>\$71,060,400</b>
--------------------------------------	---------------------



PDO – Property Damage Only

Source: National Safety Council, Injury Facts 2015 Edition

Prepared by: NDOT-Highway Safety Office, PO Box 94612, Lincoln, NE 68509

Revised 12/30/21