

December 2023 Highway Commission Meeting

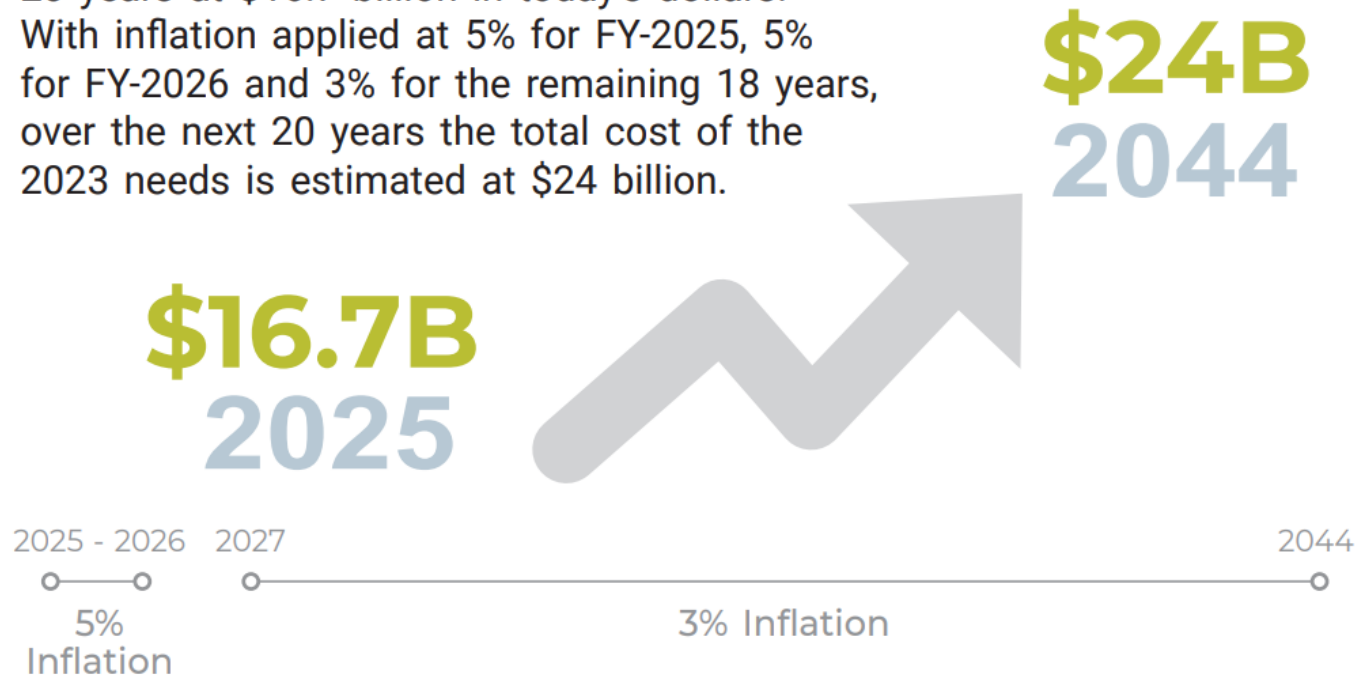
Amy Starr, P.E.
Program Management Division Head



2023 Needs Assessment

EXECUTIVE SUMMARY

This report identifies the needs for the next 20 years at \$16.7 billion in today's dollars. With inflation applied at 5% for FY-2025, 5% for FY-2026 and 3% for the remaining 18 years, over the next 20 years the total cost of the 2023 needs is estimated at \$24 billion.



\$16.7B of Needs Separated by Category



ASSET
PRESERVATION



Maintenance to improve and extend the life of existing assets.

\$9.7B



SYSTEM
MODERNIZATION
& OPERATION



Safety, geometric, or mobility upgrades that do not add capacity.

\$2.4B



CAPITAL
IMPROVEMENTS



Add capacity or support economic growth.

\$4.6B

Expressway System Update

In 1988, the Legislature placed into law the creation of an Expressway System. The first needs analysis presented by NDOT in December 1988 identified the highways to be included. The Nebraska Expressway System was expanded to encompass 16 corridors of approximately 600 miles, based on:

- **Socioeconomic Data:** Employment data, population and demographic trends, and economic activity as based on sales tax revenue and agricultural production
- **Connecting Urban Centers to the Interstate:** Population over 15,000
- **Serve Commercial Traffic:** More than 500 trucks traveled on average daily
- **Continuity Between Expressway Segments**

Expressway Progress

**Prior to construction
traditional Expressway Expansion projects require
5-11 years of preparation**



Expressway Progress

Under Construction or Contract

- ① US-275 Scribner to West Point
4-Lane Divided Expressway
- ② US-30 North Bend to Fremont
4-Lane Divided Expressway on New Alignment
- ④ US-34/US-75 Murray to Plattsmouth
4-Lane Divided Expressway

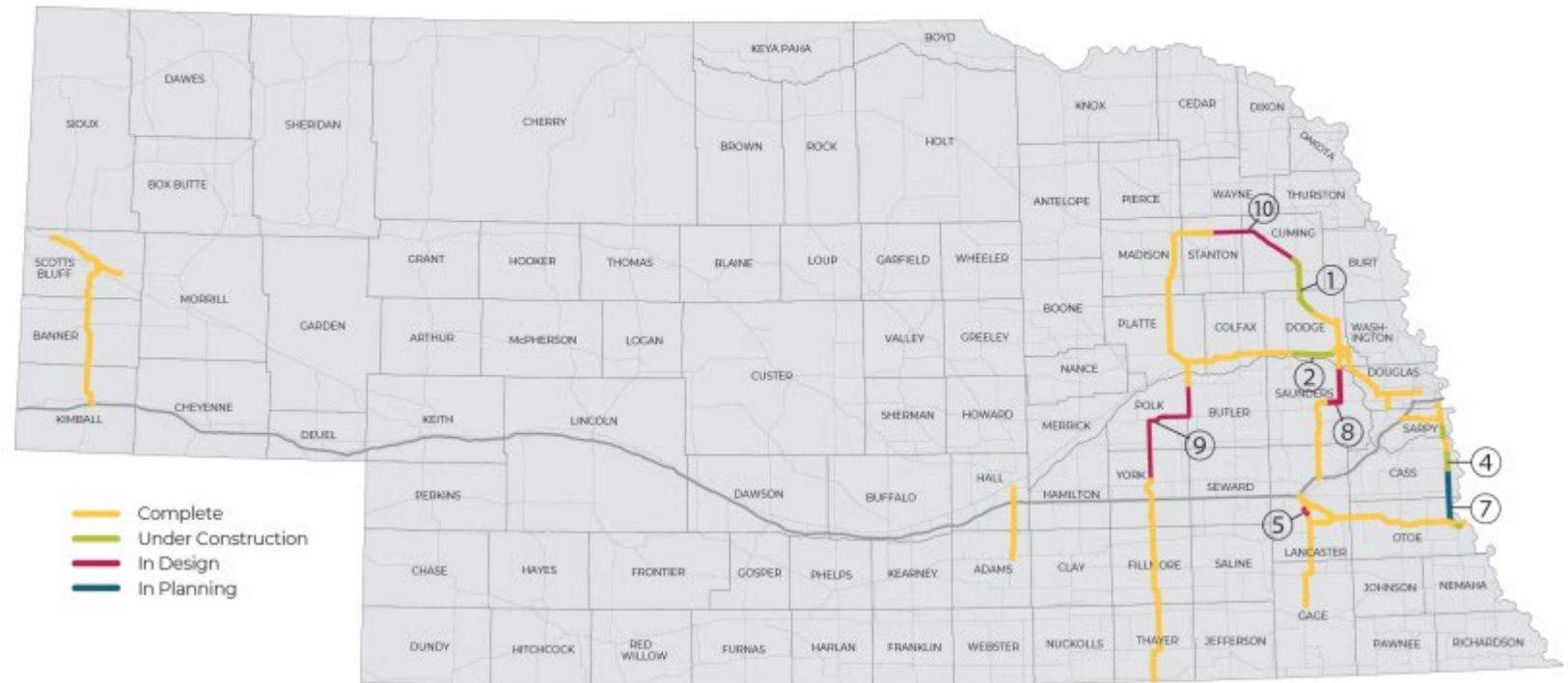
In Design

- ⑤ US-77 Lincoln West Beltway
Interchanges at Warlick Blvd. & Pioneers Blvd.
- ⑧ US-77 Wahoo to Fremont
4-Lane Divided Expressway
- ⑨ US-81 York to Columbus
4-Lane Divided Expressway
- ⑩ US-275 West Point to West of Pilger
4-Lane Divided Expressway

In Planning

- ⑦ US-75 Nebraska City to Murray
4-Lane Divided Expressway

Original Nebraska Expressway System (1988) Progress Map



Expressway System Schedule

Current Construction Schedule for the Uncompleted Expressway System																								
Location	Length	ADT*	Truck ADT*	Total Cost**	FY23	FY24	FY25	FY26	FY27	FY28	FY29	FY30	FY31	FY32	FY33	FY34	FY35	FY36	FY37	FY38	FY39	FY40	FY41	FY42
US-77 (Corridor No. 3)																								
Lincoln West Bypass	4.6		2,185	\$35.5																				
US-275 (Corridor No. 7)																								
Scribner North & South	5.34	6,410	910	\$64																				
Scribner North	4.38	6,370	1,145	\$40																				
West Point South	4.26	7,920	1,095	\$20																				
West Point North & South	4.58	8,570	1,245	\$29																				
Beemer – West Point	5.52	5,670	965	\$61																				
Wisner – Beemer	6.55	5,025	880	\$71																				
Pilger – Wisner	5	6,630	1,265	\$46																				
Pilger West	10.3	5,480	1,140	\$132																				
US-75 (Corridor No. 10)																								
Murray – Plattsmouth	5.8	4,360	520	\$55																				
Union South	9.62	4,360	520	\$106																				
Union – Murray	7.2	4,815	470	\$81																				
US-77 (Corridor No. 11)																								
Wahoo East	6.12	8,520	1,075	\$78																				
Mead North	5.05	4,850	775	\$65																				
Fremont South	4.97	5,605	880	\$65																				
US-30 (Corridor No. 12)																								
North Bend – Fremont	10.66	8,310	900	\$97																				
US-81 (Corridor No. 13)																								
York North	6.8	4,055	510	\$75																				
Stromsburg South	5.9	3,950	460	\$65																				
Stromsburg North	4.5	3,385	515	\$50																				
Osceola East & West	8.4	3,955	610	\$92																				
Shelby East & West	6.4	3,985	615	\$70																				
E Jct N-92 North	9	6,210	675	\$99																				

*Average Daily Traffic
 Total Cost is based on current prices which includes design, utility relocation, land acquisition, and construction engineering (In Million)

■ - Construction ■ - In Design ■ - Planning

Projected construction schedules for uncompleted expressway system assumes development is not constrained by:

Resource agency staffing constraints

Significant cost escalation

Future inflation

Contractor capacity

Material shortages

Extreme weather conditions

Expressway System Schedule

Current Construction Schedule for the Uncompleted Expressway System																								
Location	Length	ADT*	Truck ADT*	Total Cost**	FY23	FY24	FY25	FY26	FY27	FY28	FY29	FY30	FY31	FY32	FY33	FY34	FY35	FY36	FY37	FY38	FY39	FY40	FY41	FY42
US-77 (Corridor No. 3)																								
Lincoln West Bypass	4.6		2,185	\$35.5																				
US-275 (Corridor No. 7)																								
Scribner North & South	5.34	6,410	910	\$64																				
Scribner North	4.38	6,370	1,145	\$40																				
West Point South	4.26	7,920	1,095	\$20																				
West Point North & South	4.58	8,570	1,245	\$29																				
Beemer – West Point	5.52	5,670	965	\$61																				
Wisner – Beemer	6.55	5,025	880	\$71																				
Pilger – Wisner	5	6,630	1,265	\$46																				
Pilger West	10.3	5,480	1,140	\$132																				
US-75 (Corridor No. 10)																								
Murray – Plattsmouth	5.8	4,360	520	\$55																				
Union South	9.62	4,360	520	\$106																				
Union – Murray	7.2	4,815	470	\$81																				
US-77 (Corridor No. 11)																								
Wahoo East	6.12	8,520	1,075	\$78																				
Mead North	5.05	4,850	775	\$65																				
Fremont South	4.97	5,605	880	\$65																				
US-30 (Corridor No. 12)																								
North Bend – Fremont	10.66	8,310	900	\$97																				
US-81 (Corridor No. 13)																								
York North	6.8	4,055	510	\$75																				
Stromsburg South	5.9	3,950	460	\$65																				
Stromsburg North	4.5	3,385	515	\$50																				
Osceola East & West	8.4	3,955	610	\$92																				
Shelby East & West	6.4	3,985	615	\$70																				
E Jct N-92 North	9	6,210	675	\$99																				

*Average Daily Traffic
 Total Cost is based on current prices which includes design, utility relocation, land acquisition, and construction engineering (In Million**)

■ - Construction
 ■ - In Design
 ■ - Planning

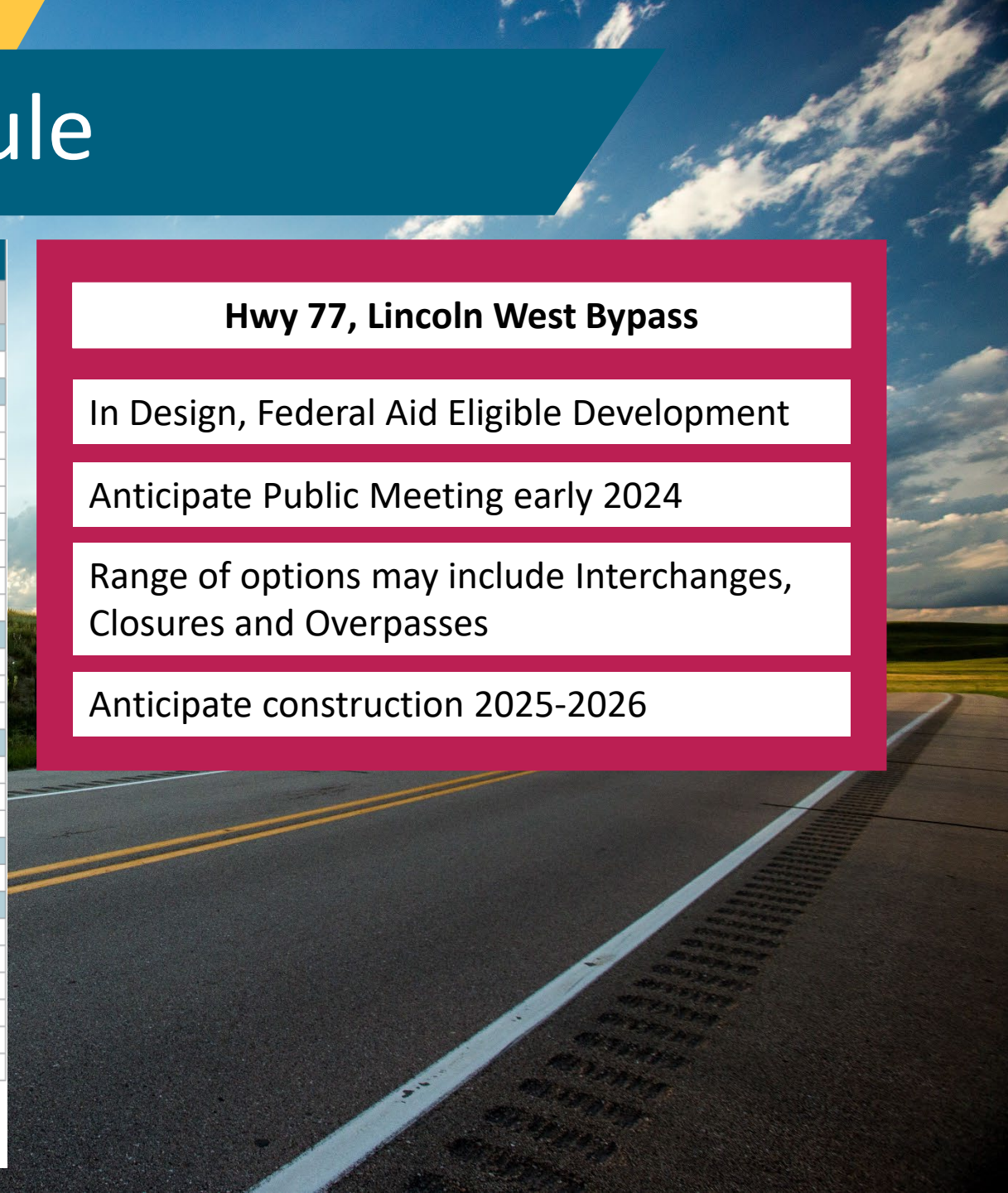
Hwy 77, Lincoln West Bypass

In Design, Federal Aid Eligible Development

Anticipate Public Meeting early 2024

Range of options may include Interchanges, Closures and Overpasses

Anticipate construction 2025-2026



Expressway System Schedule

Current Construction Schedule for the Uncompleted Expressway System																								
Location	Length	ADT*	Truck ADT*	Total Cost**	FY23	FY24	FY25	FY26	FY27	FY28	FY29	FY30	FY31	FY32	FY33	FY34	FY35	FY36	FY37	FY38	FY39	FY40	FY41	FY42
US-77 (Corridor No. 3)																								
Lincoln West Bypass	4.6		2,185	\$35.5																				
US-275 (Corridor No. 7)																								
Scribner North & South	5.34	6,410	910	\$64																				
Scribner North	4.38	6,370	1,145	\$40																				
West Point South	4.26	7,920	1,095	\$20																				
West Point North & South	4.58	8,570	1,245	\$29																				
Beemer – West Point	5.52	5,670	965	\$61																				
Wisner – Beemer	6.55	5,025	880	\$71																				
Pilger – Wisner	5	6,630	1,265	\$46																				
Pilger West	10.3	5,480	1,140	\$132																				
US-75 (Corridor No. 10)																								
Murray – Plattsmouth	5.8	4,360	520	\$55																				
Union South	9.62	4,360	520	\$106																				
Union – Murray	7.2	4,815	470	\$81																				
US-77 (Corridor No. 11)																								
Wahoo East	6.12	8,520	1,075	\$78																				
Mead North	5.05	4,850	775	\$65																				
Fremont South	4.97	5,605	880	\$65																				
US-30 (Corridor No. 12)																								
North Bend – Fremont	10.66	8,310	900	\$97																				
US-81 (Corridor No. 13)																								
York North	6.8	4,055	510	\$75																				
Stromsburg South	5.9	3,950	460	\$65																				
Stromsburg North	4.5	3,385	515	\$50																				
Osceola East & West	8.4	3,955	610	\$92																				
Shelby East & West	6.4	3,985	615	\$70																				
E Jct N-92 North	9	6,210	675	\$99																				

*Average Daily Traffic
 Total Cost is based on current prices which includes design, utility relocation, land acquisition, and construction engineering (In Million**)

■ - Construction ■ - In Design ■ - Planning

Hwy 275, Scribner to West Point

Under construction through 2024

Hwy 275 Norfolk to Wisner

In Design, Federal Aid Eligible development

Seeking Competitive Federal Grants

Dec 21: Public Hearing for FHWA signed draft
 Jan 22: Public comment period closed

Anticipate construction 2025-2027

Hwy 275, Wisner to West Point

In Design, will not be Federal Aid Eligible

Anticipate construction 2026-2029

Expressway System Schedule

Current Construction Schedule for the Uncompleted Expressway System

Location	Length	ADT*	Truck ADT*	Total Cost**	FY23	FY24	FY25	FY26	FY27	FY28	FY29	FY30	FY31	FY32	FY33	FY34	FY35	FY36	FY37	FY38	FY39	FY40	FY41	FY42
US-77 (Corridor No. 3)	5																							
Lincoln West Bypass	4.6		2,185	\$35.5																				
US-275 (Corridor No. 7)	46																							
Scribner North & South	5.34	6,410	910	\$64																				
Scribner North	4.38	6,370	1,145	\$40																				
West Point South	4.26	7,920	1,095	\$20																				
West Point North & South	4.58	8,570	1,245	\$29																				
Beemer – West Point	5.52	5,670	965	\$61																				
Wisner – Beemer	6.55	5,025	880	\$71																				
Pilger – Wisner	5	6,630	1,265	\$46																				
Pilger West	10.3	5,480	1,140	\$132																				
US-75 (Corridor No. 10)	23																							
Murray – Plattsmouth	5.8	4,360	520	\$55																				
Union South	9.62	4,360	520	\$106																				
Union – Murray	7.2	4,815	470	\$81																				
US-77 (Corridor No. 11)	19																							
Wahoo East	6.12	8,520	1,075	\$78																				
Mead North	5.05	4,850	775	\$65																				
Fremont South	4.97	5,605	880	\$65																				
US-30 (Corridor No. 12)	11																							
North Bend – Fremont	10.66	8,310	900	\$97																				
US-81 (Corridor No. 13)	41																							
York North	6.8	4,055	510	\$75																				
Stromsburg South	5.9	3,950	460	\$65																				
Stromsburg North	4.5	3,385	515	\$50																				
Osceola East & West	8.4	3,955	610	\$92																				
Shelby East & West	6.4	3,985	615	\$70																				
E Jct N-92 North	9	6,210	675	\$99																				

*Average Daily Traffic

Total Cost is based on current prices which includes design, utility relocation, land acquisition, and construction engineering (In Million**)

■ - Construction ■ - In Design ■ - Planning

Hwy 75, Murray to Plattsmouth

Construction complete in 2024

Hwy 75, Nebraska City to Murray

In planning phase

Anticipate 2 plus 2 strategy for 4 lane Expy

Anticipate construction 2033-2036

Expressway System Schedule

Current Construction Schedule for the Uncompleted Expressway System

Location	Length	ADT*	Truck ADT*	Total Cost**	FY23	FY24	FY25	FY26	FY27	FY28	FY29	FY30	FY31	FY32	FY33	FY34	FY35	FY36	FY37	FY38	FY39	FY40	FY41	FY42
US-77 (Corridor No. 3)	5																							
Lincoln West Bypass	4.6		2,185	\$35.5																				
US-275 (Corridor No. 7)	46																							
Scribner North & South	5.34	6,410	910	\$64																				
Scribner North	4.38	6,370	1,145	\$40																				
West Point South	4.26	7,920	1,095	\$20																				
West Point North & South	4.58	8,570	1,245	\$29																				
Beemer – West Point	5.52	5,670	965	\$61																				
Wisner – Beemer	6.55	5,025	880	\$71																				
Pilger – Wisner	5	6,630	1,265	\$46																				
Pilger West	10.3	5,480	1,140	\$132																				
US-75 (Corridor No. 10)	23																							
Murray – Plattsmouth	5.8	4,360	520	\$55																				
Union South	9.62	4,360	520	\$106																				
Union – Murray	7.2	4,815	470	\$81																				
US-77 (Corridor No. 11)	19																							
Wahoo East	6.12	8,520	1,075	\$78																				
Mead North	5.05	4,850	775	\$65																				
Fremont South	4.97	5,605	880	\$65																				
US-30 (Corridor No. 12)	11																							
North Bend – Fremont	10.66	8,310	900	\$97																				
US-81 (Corridor No. 13)	41																							
York North	6.8	4,055	510	\$75																				
Stromsburg South	5.9	3,950	460	\$65																				
Stromsburg North	4.5	3,385	515	\$50																				
Osceola East & West	8.4	3,955	610	\$92																				
Shelby East & West	6.4	3,985	615	\$70																				
E Jct N-92 North	9	6,210	675	\$99																				

*Average Daily Traffic

Total Cost is based on current prices which includes design, utility relocation, land acquisition, and construction engineering (In Million**)

■ - Construction ■ - In Design ■ - Planning

Hwy 77, Wahoo to Fremont

In Design, not developed Federal Aid eligible

4 New lanes anticipated

US Army Corps of Engineers is lead Environmental Assessment agency

Anticipate construction 2027-2031

Expressway System Schedule

Current Construction Schedule for the Uncompleted Expressway System																								
Location	Length	ADT*	Truck ADT*	Total Cost**	FY23	FY24	FY25	FY26	FY27	FY28	FY29	FY30	FY31	FY32	FY33	FY34	FY35	FY36	FY37	FY38	FY39	FY40	FY41	FY42
US-77 (Corridor No. 3)																								
Lincoln West Bypass	4.6		2,185	\$35.5																				
US-275 (Corridor No. 7)																								
Scribner North & South	5.34	6,410	910	\$64																				
Scribner North	4.38	6,370	1,145	\$40																				
West Point South	4.26	7,920	1,095	\$20																				
West Point North & South	4.58	8,570	1,245	\$29																				
Beemer – West Point	5.52	5,670	965	\$61																				
Wisner – Beemer	6.55	5,025	880	\$71																				
Pilger – Wisner	5	6,630	1,265	\$46																				
Pilger West	10.3	5,480	1,140	\$132																				
US-75 (Corridor No. 10)																								
Murray – Plattsmouth	5.8	4,360	520	\$55																				
Union South	9.62	4,360	520	\$106																				
Union – Murray	7.2	4,815	470	\$81																				
US-77 (Corridor No. 11)																								
Wahoo East	6.12	8,520	1,075	\$78																				
Mead North	5.05	4,850	775	\$65																				
Fremont South	4.97	5,605	880	\$65																				
US-30 (Corridor No. 12)																								
North Bend – Fremont	10.66	8,310	900	\$97																				
US-81 (Corridor No. 13)																								
York North	6.8	4,055	510	\$75																				
Stromsburg South	5.9	3,950	460	\$65																				
Stromsburg North	4.5	3,385	515	\$50																				
Osceola East & West	8.4	3,955	610	\$92																				
Shelby East & West	6.4	3,985	615	\$70																				
E Jct N-92 North	9	6,210	675	\$99																				

Hwy 30, North Bend to Fremont

Construction complete in 2024



*Average Daily Traffic
 Total Cost is based on current prices which includes design, utility relocation, land acquisition, and construction engineering (In Million)

■ - Construction
 ■ - In Design
 ■ - Planning

Expressway System Schedule

Current Construction Schedule for the Uncompleted Expressway System																								
Location	Length	ADT*	Truck ADT*	Total Cost**	FY23	FY24	FY25	FY26	FY27	FY28	FY29	FY30	FY31	FY32	FY33	FY34	FY35	FY36	FY37	FY38	FY39	FY40	FY41	FY42
US-77 (Corridor No. 3)																								
Lincoln West Bypass	4.6		2,185	\$35.5																				
US-275 (Corridor No. 7)																								
Scribner North & South	5.34	6,410	910	\$64																				
Scribner North	4.38	6,370	1,145	\$40																				
West Point South	4.26	7,920	1,095	\$20																				
West Point North & South	4.58	8,570	1,245	\$29																				
Beemer – West Point	5.52	5,670	965	\$61																				
Wisner – Beemer	6.55	5,025	880	\$71																				
Pilger – Wisner	5	6,630	1,265	\$46																				
Pilger West	10.3	5,480	1,140	\$132																				
US-75 (Corridor No. 10)																								
Murray – Plattsmouth	5.8	4,360	520	\$55																				
Union South	9.62	4,360	520	\$106																				
Union – Murray	7.2	4,815	470	\$81																				
US-77 (Corridor No. 11)																								
Wahoo East	6.12	8,520	1,075	\$78																				
Mead North	5.05	4,850	775	\$65																				
Fremont South	4.97	5,605	880	\$65																				
US-30 (Corridor No. 12)																								
North Bend – Fremont	10.66	8,310	900	\$97																				
US-81 (Corridor No. 13)																								
York North	6.8	4,055	510	\$75																				
Stromsburg South	5.9	3,950	460	\$65																				
Stromsburg North	4.5	3,385	515	\$50																				
Osceola East & West	8.4	3,955	610	\$92																				
Shelby East & West	6.4	3,985	615	\$70																				
E Jct N-92 North	9	6,210	675	\$99																				

*Average Daily Traffic
 Total Cost is based on current prices which includes design, utility relocation, land acquisition, and construction engineering (In Million)

■ - Construction
 ■ - In Design
 ■ - Planning

Hwy 81, York to Columbus

In Design, Federal Aid eligible development

Anticipate 2 plus 2 strategy for 4-lane Expy

Construction projected 2029-2034



2023 HCM Requested Status Updates

Capital Improvement Project	Selected for BNA or TIA funds	Status
I-80, Newberry Interchange modification and 4-lane construction from L56G to Hwy 30, North Platte	Selected	Planning in progress
Hwy 26, 2 Plus 2, 4 lane expansion from Minatare to Hwy 385	Selected	Design in progress
Hwy 385, Super 2 passing lanes from Alliance to Chadron	Selected	Planning in progress
Hwy 385, Super 2 passing lanes from Chadron to South Dakota	Not Selected	Not Programmed
Hwy 83, Super 2 passing lanes from McCook to North Platte	Selected	<p>Construction Advertisement & Design in Progress</p> <p>Lake Maloney South currently advertised for Dec Letting Construction begins 2024</p> <p>Final Project to complete Super 2 corridor: Wellfleet South is in Design, Construction anticipated to begin 2025</p>
Hwy 83, Super 2 passing lanes from McCook to Kansas	Not Selected	Not Programmed

A scenic landscape featuring rolling green hills under a cloudy sky. A winding road curves through the foreground, bordered by a fence. The text "Thank you!" is overlaid in the center in a large, white, sans-serif font.

Thank you!